



ABBESS HEALTHCARE OPC PVT. LTD.



ABBESS HEALTHCARE OPC PVT. LTD.

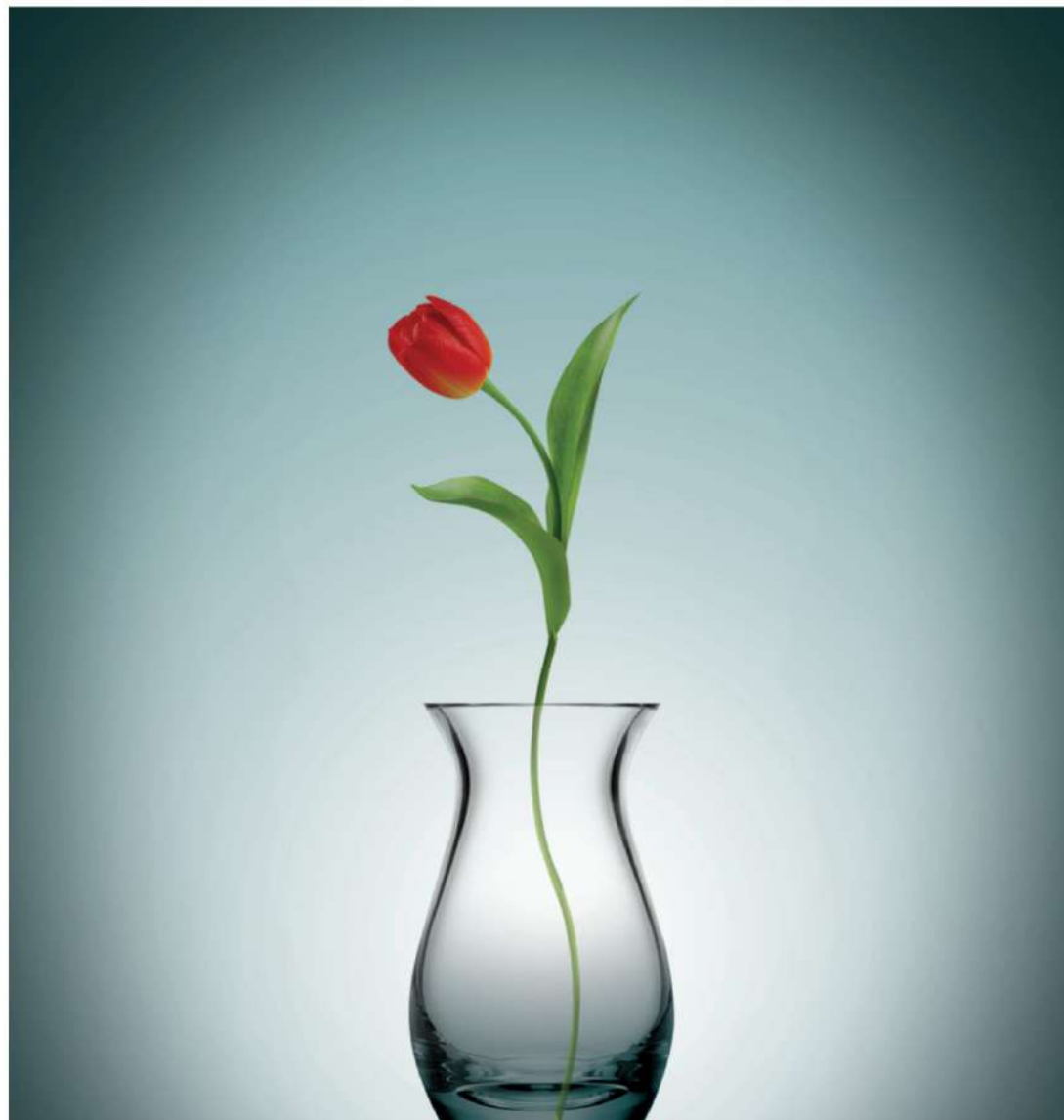
Research Centre:

Sec - 8, CBD Belapur, Navi Mumbai,
India - 400614

Visit us at : www.abbess.in

Email : dr.meenakshi@abbess.in
research@abbess.in

For Business enquiry: bd@abbess.in



ABBESS HEALTHCARE OPC PVT. LTD.

ABBESS HEALTHCARE OPC PVT. LTD.

Abbess Healthcare OPC Pvt. Ltd. was founded in October 2014 by Dr. Meenakshi (B Pharma, M Pharma, PhD, MBA) with the vision of partnering pharmaceutical companies across the globe in the development of cutting edge formulations through rigorous R&D.

Dr. Meenakshi possesses over 15 years of rich experience in pharmaceutical research and development. She has made significant contributions to the Indian pharmaceutical majors; like Torrent, IPCA Laboratories, Glenmark, Nicholas Piramal, Ajanta and Granules India Limited. She was heading the R&D centers for more than half a decade, before starting Abbess.

Her expertise include product development, pharmaceutical process development by non-infringing route and technology development. She has successfully carried out product development for regulated markets, more prominently for the USA market, in pharmaceutical, food & other allied fields of the healthcare segment.

Abbess is a professionally managed organization consisting of highly experienced professionals engaged in product development and product lifecycle management for both national and international clients.

The company is committed to provide services to the pharmaceutical industries, pharma research organizations, Nutraceutical, Cosmetological, & Ayurvedical industries.

Who are our Clients;

- Pharmaceutical Manufactures & Suppliers
- Excipient Manufactures & Suppliers
- API Manufacturers & Suppliers
- Pharmaceutical Marketing Organizations
- Food, Nutraceuticals & Cosmetics Manufacturer & Suppliers
- Technology and Process Developers
- NCEs developers

VISION

To develop a platform of innovative products, ideas and cutting edge technology for healthcare industries by the partnering with pharmaceutical companies across the globe in the development of advanced and sophisticated formulations through rigorous R&D

MISSION

- To be a helping hand to pharmaceutical, herbal & nutraceutical firms by formulating some of their products to reach the market on-time with a wide product portfolio.
- To give patented formulations to the organizations who are engaged in high-end formulation research & development.
- To develop technology based products for pharmaceutical & allied fields.
- To support healthcare industries & the govt. in patenting our plants and parts inherited to us by our ancestors by conducting thorough research in natural/ traditional system of medicines in a modernized systematic manner to handle life threatening diseases.
- Eliminating the obstacles observed while formulation of products using the various newly discovered, clinically approved molecules by employing the right strategy & technology with scientifically-skilled manpower.

SERVICES / SCOPE

- **Formulation development** : Any dosage form, from any source of medicine like Synthetic, Herbal, Nutraceuticals & Cosmetic preparations

- Oral solid dosage form like tablet, granules,
- capsules, dry syrups
- Liquid dosage forms
- Parenteral formulations
- Ointments and creams
- pMDIs
- Oral films
- Aerosol products
- Eye drops

For regulated market – US/ EU/ Canada/ Australia, ROW, India

- Partial development to trigger the product registration process of ANDAs
- Development by DOE and QBD
- Product registration for all dosage form across the globe
- Technology development for pharmaceutical and allied healthcare companies
- IP support & NIS report for API & formulations & new technology
- Complete regulatory support for drug product & drug substance
- Product and process validation
- Analytical method development and analytical method validation
- Product technology transfer in India & overseas
- Content writing of dossiers, all modules
- Product registration and filing in the regulated
- Content writing of dossiers, all modules

- Product registration and filing in the regulated market, semi regulated market & in India.
- Offshore CQA & QA support for plants, to upgrade their quality system
- Trained manpower for CQA/ QA/ Marketing
- Offshore technology transfer in India & internationally by trained personnel
- Trouble shooting
- Regulatory query solving
- Preclinical study support on animals for NCEs & NDA filing
- We provide end-to-end solution in product development & product life cycle management
 - In house scale-up studies by QBD approach.
 - Our facility supports to the study of batch sizes starting from 200gm to 50kg
- Sample analysis
- Stability testing and evaluation
- We have collaborated with a public testing laboratory for doing the routine batch and stability analysis.
- We have a GMP facility which can accommodate a small batch up to 25kg for pilot BE studies and BE studies for low dosage drugs.

ABBESS HEALTHCARE OPC PVT. LTD.

FACILITY

Our facility supports to study all most all scale-up & engineering variables. We have adequate scientifically-skilled manpower, equipments & instruments which can cater the development by QBD approach efficiently.



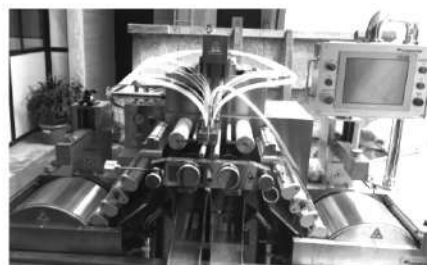
Wal-Unic Granulator



Solid - Liquid Extractor



Integrated Granulator Inline Co.



Soft Gel Capsule Machine



Isolation & Extraction Unit



Single Port Mixture



Ointment Mfg. Unit

List of Equipments and Instruments

SR. NO.	NAME OF EQUIPMENT	MAKE	MODEL / CAPACITY
Formulation Development			
1	Analytical Balance (To 3 Decimal Digit)	CONTECH	CB 50
2	Analytical Balance (To 4 Decimal Digit)	CONTECH	CAS-44
3	Double Cone Blender (1.5 Kg)	KEVIN	MDI-2101P
4	Wet Granulator	KEVIN	MDI-2101P
5	Dry Granulator	KEVIN	MDI-2101P
6	Sieve Shaker	KEVIN	MDI-2101P
7	Moisture Analyser	CONTECH	CB-50
8	Tablet Punching Machine	KARNAVATI ENGINEERING PVT. LTD.	RIMEK MINI PRESS-1
9	Pouch Sealing Machine	AMAR PACKAGING	A TO Z PACK SEAL
10	Magnetic Stirrer	REMI	1MLH
11	BOD Incubator -1 (60°C)	EDEN TECHNOLOGY SOLUTION	STD/BOD
12	BOD Incubator - 2 (10°C)	EDEN TECHNOLOGY SOLUTION	STD/BOD
13	Tablet Coater		
14	Capsule Filling Machine	KARISHMA PHARMA MACHINERY	PCF-300
15	Stability Chamber (25°C + 2°C, 60% Rh + 5%)	EDEN Techno Solution	NEC-210-R10
16	Stability Chamber (30°C + 2°C, 65% Rh + 5%)	EDEN Techno Solution	NEC-210-R10
17	Stability Chamber (40°C + 2°C, 75% Rh + 5%)	EDEN Techno Solution	NEC-210-R10
18	Photo-stability Chamber	EDEN Techno Solution	Not Applicable
19	Desidry Desiccant Dehumidifier	DUEX	DIS 470 CFM
20	RMG (Rapid Mixer Granulator)	SAMS techno mech	Lab Model (3 Lt & 10 Lt)
21	FBD (Fluid Bled Dryer)	SAMS techno mech	Lab Model (3 kg & 5 kg)
22	Multi-mill	SAMS techno mech	Lab Model
23	Octagonal blender	SAMS techno mech	Lab Model (5 Lt & 15 Lt)
24	Friability Tester	VEEGO	MSI - 46
25	Disintegration Apparatus	VEEGO	MSI - 42
26	Vernier Caliper	AEROSPACE	CD-6 ASX
27	Weight Box	Viba Scientific	1mg to 200mg
28	Screw gauge	Yuzuki	Not Applicable

ABBESS HEALTHCARE OPC PVT. LTD.

Additional Equipments and instruments of Abbess Healthcare

SR. NO.	NAME OF EQUIPMENT	MAKE	MODEL / Capacity
1	Double Cone Blender	Kevin	1 to 10 kg
2	Multi processor	Kevin	1 to 10 kg
3	Auto Coater	Bowman & Archer	102 g to 250 kg
4	Tray Dryer	Bowman & Archer	Not Applicable
5	V shaped Blender	Anish Pharma	5 lt to 50 lt
6	Fluid bed processor	Anish Pharma	5-50 lt
7	Tablet Coater	Bowman & Archer	Not Applicable
8	Spheronizer	Anish Pharma	0.5-1 lt to to 40 lt
9	Extruder	Anish Pharma	5-10 kg/hr to 20-25 kg/hr
10	Sieve Shaker	Bowman & Archer	Not Applicable
11	Liquid Filling M/C	Anish Pharma	Not Applicable
12	Spray Dryer	Anish Pharma	Not Applicable
13	High Pressure Homogenizer	Bowman & Archer	Not Applicable
14	Mechanical Stirrer	Remi	Not Applicable
15	Freeze Dryer	Marti Christ/ Vertex	Not Applicable
16	LAF	Bry-Air	Not Applicable
17	Ointment Filling Machine	Anish Pharma	10-50 lt
18	Ointment Crimping Machine	Anish Pharma	Not Applicable
19	Soft Gelatin Capsule Machine	Anish Pharma	Not Applicable
20	Ointment Manufacturing Plant	Anish Pharma	500g to 50kg
21	Solid Liquid Extractor Unit	Anish Pharma	500g onwards

Central Laboratory

SR. NO.	NAME OF EQUIPMENT	MAKE	MODEL / Capacity
1	Dissolution Apparatus	LAB INDIA ANALYTICAL	DS- 8000
2	Fourier Transform Infrared Spectroscopy (FTIR)	SHIMADZU	FTIR 8400S
3	Solvent Filtration Assembly	BOROSIL	Not Applicable
4	TLC Scanner Assembly (HPTLC)	CAMAG TLC SCANNER 3	Not Applicable
5	DSC (Heat Flux DSC)	SII NANOTECH (SEIKO)	DSC6220
6	TLC Applicator Assembly (HPTLC)	CAMAG LINOMATE 5	Not Applicable
7	Particle Size Analyzer (PSA)	SYMPATEC	NANOPHOX
8	Flash Chromatography	YAMAZEN	RE-X10
9	High Pressure Homogenizer (HPH)	PANDA PLUS	PANDA PLUS 2000
10	Electronic Mantel	DOLPHIN	SONAPROS PR-250M

Analytical Development

SR. NO.	NAME OF EQUIPMENT	MAKE	MODEL / Capacity
1	High Performance Liquid Chromatography (HPLC) with UV	WATERS	ALLIANCE 2695/95
2	High Performance Liquid Chromatography (HPLC) with UV	WATERS	ALLIANCE 2690/95
3	High Performance Liquid Chromatography (HPLC) with PDA	WATERS	ALLIANCE 2690/95
4	High Performance Liquid Chromatography (HPLC) with PDA	WATERS	ALLIANCE 2690/95
5	High Performance Liquid Chromatography (HPLC) with PDA	WATERS	ALLIANCE 2690/95
6	High Performance Liquid Chromatography (HPLC)	SHIMADZU	LC-2010
7	Gas Chromatography	SHIMADZU	GC-2014
8	Weighing balance	RADWAG	AS 60/220.R2
9	pH Meter	Agilent Technology	3200P
10	Sonicator	LABSONIC	LS/10 LC
11	Hot air oven	TEMPO	Not Applicable
12	Hot air oven	I-THERM	AI-5941
13	Wrist action Mechanical Shaker	KUMAR	Not Applicable
14	Dissolution Apparatus	ELECTROLAB	EDT08LX
15	Water Purifier	LABLINK	EXTRA PURE 10
16	UV/Visible Spectrophotometer (Double Beam)	SHIMADZU	UV-1800 240V

ABBESS HEALTHCARE OPC PVT. LTD.

APPROVALS & ACCREDITATIONS

- FDA Maharashtra
- CDSO
- MSME – Govt. of India.




 भारत सरकार
 Government of India
 सूक्ष्म, लघु और मध्यम उद्यम मंत्रालय
 MINISTRY OF MICRO, SMALL & MEDIUM ENTERPRISES


 सूक्ष्म, लघु और मध्यम उद्यम
 MICRO, SMALL & MEDIUM ENTERPRISES


 उद्योग आधार


 Udyog Aadhaar

F	Type of Enterprise	Micro	Small	Medium
	Manufacturing	A	B	C
	Services	D	E	F
	UAM NO.	MH130000593359		

Udyog Aadhaar Registration Certificate

Udyog Aadhaar Number: MH130000593359

Name of Enterprise: ABBESS HEALTHCARE OPC PVT. LTD.

Location of Plant Details

Sl.	Flat/Door/Block No.	Name of Premises/Building/Village	Road/Street/ Lane	Area/Locality	City	Pin	State	District
1	ABBESS HEALTHCARE	SAPPHIRE HEIGHTS	KANDIVALI	MUMBAI	MUMBAI SUBURBAN	400101	MAHARASHTRA	MUMBAI SUBURBAN

Official Address of Enterprise: SAPPHIRE HEIGHTS, KANDIVALI, MUMBAI MAHARASHTRA INDIA

District: MUMBAI SUBURBAN

Mobile No: 9892266555

State: MAHARASHTRA

Pin: 400101

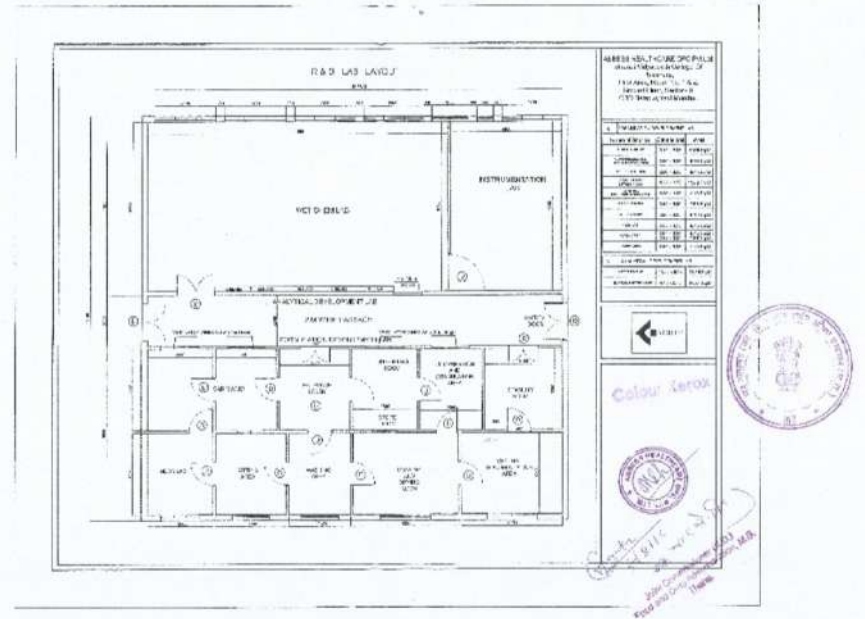
Email: research@abbess.in

Date of commencement: 25/09/2014

Major Activity: SERVICES

Enterprise Type: Medium

ABBESS RESEARCH CENTRE - LAYOUT



Follow us on....

- @abbesshealthcareopcvtltd 
- @Abbess_Research 
- @abbesshealthcare 
- @company/abbess 